

1968.

DHARTA

PAMERAN PATUNG DAN LUKISAN DUA DARI SEBELAS SENIMAN BANDUNG

PIROUS

1968-1

G. SIDHARTA

LAHIR : Nopember 1932 di Jogja.

PENDIDIKAN : 1950-1953 , ASRI Jogja dan 1953-1955 , Jan van Eyck Academie, Nederland .

HADIAH : 1952, Hadiah Seni Lukis Indonesia Baru BMKN .

PAMERAN BERSAMA : Jogja , Djakarta. 1966, "11 Seniman Bandung" di Djakarta. 1967, "The Unseen Indonesian Contemporaries" di Bangkok .

1967 , Tiga dari "11 Seniman Bandung" di Djakarta .

1968 , Thorner Art Gallery , London

BORN : in November 1932 , Jogja .

EDUCATION : 1950-1953 , Indonesian Academy of Fine Arts , 1953-1956 Jan van Eyck Academie, the Netherlands .

AWARD : 1952 , BMKN New Indonesian Painting Prize .

GROUP EXHIBITIONS : Jogja , Djakarta. 1966 "11 Bandung Artists" in Djakarta. 1967 "The Unseen Indonesian Contemporaries" in Bangkok .

1967, Three from "11 Bandung Artists" in Djakarta .

1968, Thorner Art Gallery , London

A. D. PIROUS

LAHIR : Maret 1933 , di Meulaboh, Atjeh

PENDIDIKAN : 1955-1964 Bagian Seni Rupa Institut Teknologi Bandung .

PAMERAN BERSAMA : dengan pelukis² " Sanggar Seniman " sedjak 1960 , di Bandung, Bogor, Djakarta, Jogja dan Hanoi .

1964 , di Rio de Janeiro .

1966 , "11 Seniman Bandung" di Djakarta

1967 , "The Unseen Indonesian Contemporaries" di Bangkok .

1967 , Tiga dari "11 Seniman Bandung" di Djakarta .

1968 , Thorner Art Gallery , London

BORN : in March 1933 , Meulaboh, Atjeh

EDUCATION : 1955-1964 Department of Fine Arts. Bandung Institute of Technology

GROUP EXHIBITION : Since 1960, in an artist group "Sanggar Seniman" in Bandung, Bogor , Djakarta , Jogjakarta. Hanoi.

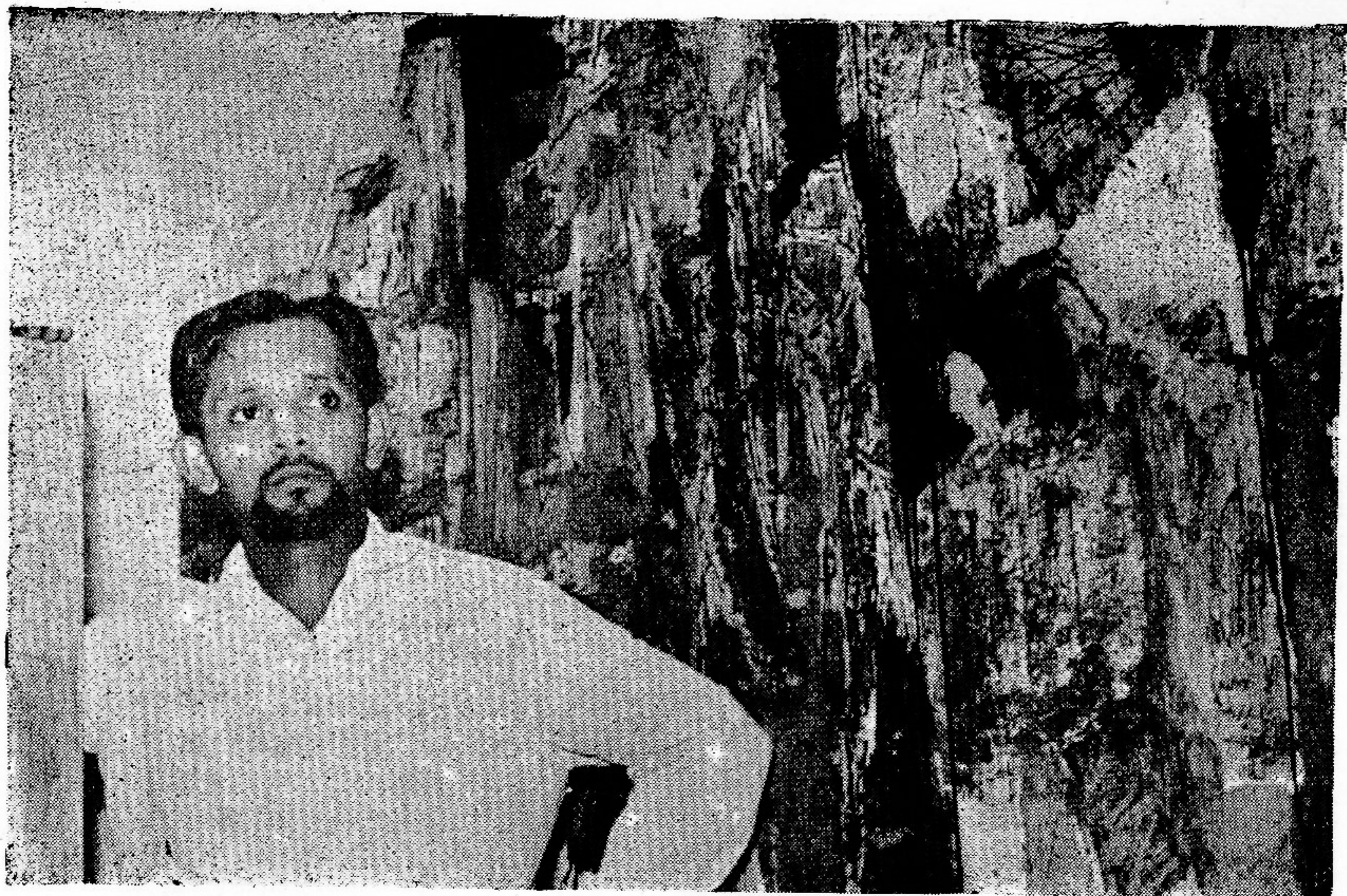
1964 , in Rio de Janeiro .

1966 , "11 Bandung Artists" in Djakarta

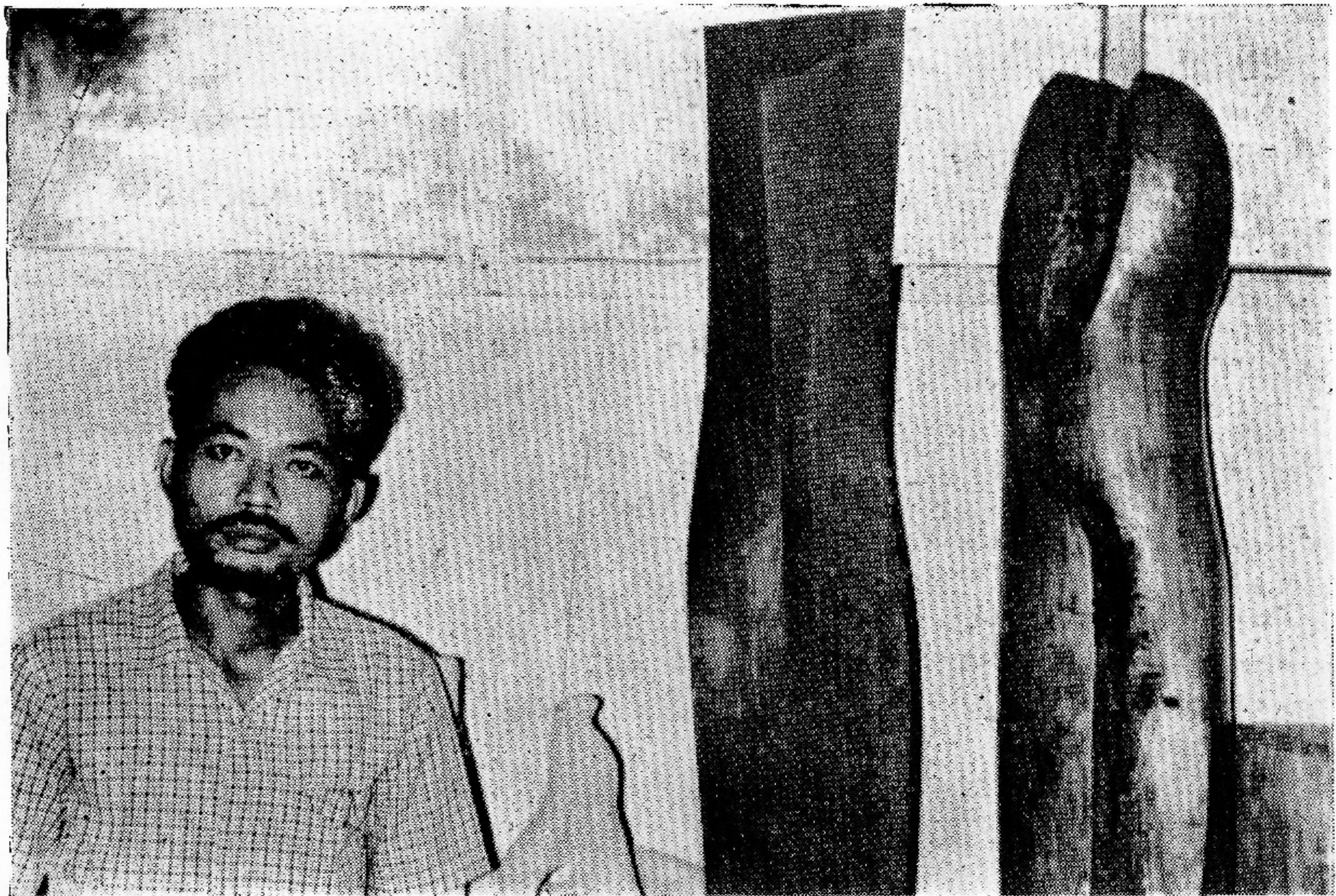
1967 , "The Unseen Indonesian Contemporaries" in Bangkok .

1967 , Three from "11 Bandung Artists" in Djakarta .

1968 , Thorner Art Gallery , London



A. D. PIROUS

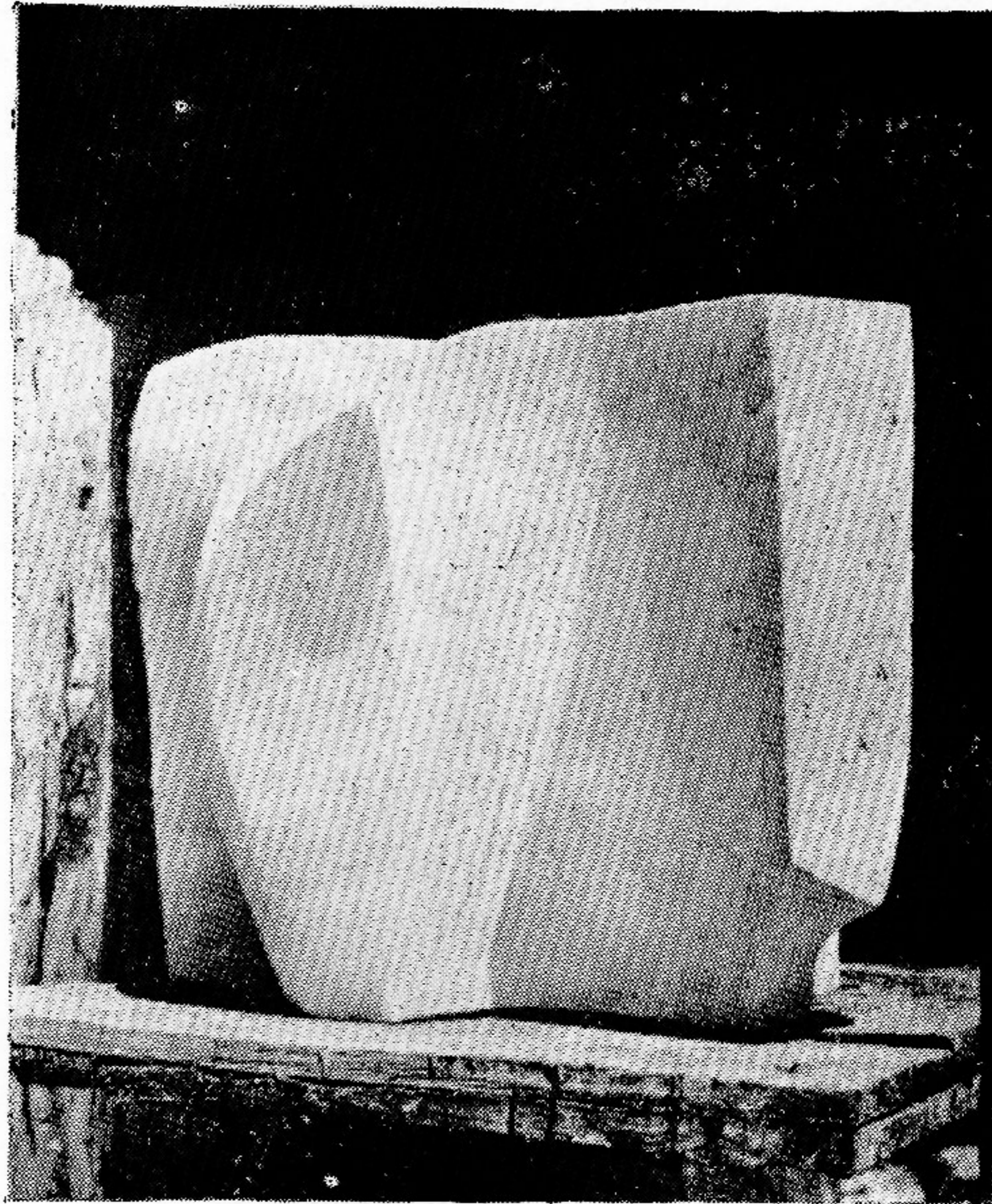


G. SIDHARTA

ms. 85

GREGORIUS SIDHARTA PATUNG / SCULPTURE

- | | | | |
|----|---|--------------------------------------|---------------------------------|
| 1 | LELESON 1967
reclining figure | djati - 90 cm
teak | Raul Jose de sa Barbosa. BRAZIL |
| 2 | IBU DAN ANAK 1967
mother and child | marmer - 60 cm
marble | Ir. T. Soekarno |
| 3 | KEPALA 1967
head | djati - 50 cm
teak | Tn. Alex Papadimitriou |
| 4 | TORSO 1967
torso | djati - 90 cm
teak | Tn. Alex Papadimitriou |
| 5 | LELESON 1968
reclining figure | marmer - 60 cm
marble | Tn. dan Nj. A. Bakrie |
| 6 | FIGURA DUDUK
sitting figure | marmer - 60 cm
marble | Tn. dan Nj. A. Bakrie |
| 7 | TORSO 1968
torso | marmer - 60 cm
marble | Ir. T. Soekarno |
| 8 | DUA TUNGGAL 1968
lovers | mahoni - 105 cm
mahogany | |
| 9 | TIANG ARTJA 1968
totem pole | mahoni - 200 cm
mahogany | |
| 10 | KEPALA DALAM KEPADATAN
massive head 1968 | batutiru - 42 cm
artificial stone | |
| 11 | KEPALA DALAM RUANG 1968
spatial head | perunggu - 40 cm
bronz | |
| 12 | FIGURA MONUMENTAL
monumental figure | sonokeling - 100 cm
sonokeling | |
| 13 | SALIB I 1968
crucifixion I | perunggu - 26 cm
bronz | Tn. B. St. Hainsborough BANGKOK |
| 14 | SALIB II 1968
crucifixion II | perunggu - 26 cm
bronz | Drs. A. Palar |
| 15 | SALIB III 1968
crucifixion III | perunggu - 26 cm
bronz | |



10. KEPALA DALAM KEPADATAN / massive head



12. DAERAH TERPENTJIL
isolated place 1968
Koleksi Tn. dan Nj. A. Bakrie

A. D. PIROUS LUKISAN / PAINTING

- ✓ 1 *The kampung* KAMPUNG SESUDAH HUDJAN
Hamlet after rain
1968. 100 x 100 cm
- ✓ 2 *The* PEMANDANGAN MALAM I
Night Landscape I
1968. 135 x 100 cm
- ✓ 3 PESTA - Fiesta
1968. 130 x 98 cm
- ✓ 4 SEBUAH TJERITA UNTUK ANAK
A story for my Son
1968. 104 x 72,5 cm
- ✓ 5 TAMAN PUTIH *The* - White Garden
1968. 90 x 70 cm
- ✓ 6 ALAM BENDA *The* - Still Life
1968. 100 X 100 cm
- 7 LAUT BIRU DAN LANGIT
LEMBAJUNG
The Deep blue Sea and purple Sky
1968. 60 x 60 cm
- portrait* ✓ 8 HATINJA MURUNG - Melancholy
1968. 64 x 48 cm
- ✓ 9 PANTULAN REMBULAN
Reflection of the Moon
1968. 58 x 43 cm
Mr. B. St. Rainsborough.
- ✓ 10 *The* KISAH SEBUAH TAMAN HIDJAU
Story of a green Garden
1968. 43 x 30 cm
- ✓ 11 *The* PETUALANG - Wanderer
1968. 100 x 80 cm
- ✓ 12 DAERAH TERPENTJIL
An isolated Place
1968. 46 x 60 cm
Tn. Nj. A. Bakrie
- ✓ 13 HEWAN *The* - Animal
1968. 100 x 70 cm
- ✓ 14 PADANG OKER *The* - Ochre Land
1968. 100 X 80 cm
- ✓ 15 DELTA SUBUR *A* - Fertile Delta
1968. 25 X 48,5 cm
- ✓ 16 DUA MUSIM *The* - Two Seasons
1968. 67 x 46 cm diptych
- ✓ 17 DERMAGA *The* - Pier
1968. 50 x 65 cm
- ✓ 18 ANAK DAN BURUNG
The Child and Birds
1968 52 x 85 cm
- ✓ 19 BUMI HIDJAU *The* - Green Earth
1963. 60 x 46 cm
- ✓ 20 ANAK DENGAN MAINAN
A Child with Toys
1968. 35 x 35 cm
- ✓ 21 BUKIT KARANG *The* - Rocky Hill
1968. 100 x 70 cm
- 22 MALAM DISISI KOTA
A Suburb by night
1968. 64 x 33 cm

- ✓ 23 PEGI TJERAH ^A - Bright Morning
1968. 116 x 73 cm
- ✓ 24 ABSTRAKSI SEBUAH BARONG
The Abstraction of a Barong
1968. 64 x 48 cm
- ✓ 25 TJILI BALI ^{The} - Balinese Puppet
1968. 32 x 60 cm
- ✓ 26 KOMPOSISI DGN BIRU PIRUS
Composition in Blue turquoise
1968. 100 x 100 cm
- ✓ 27 ARAKAN GELANDANGAN
The Tramps Parade
1968. 135 x 100 cm
- ✓ 28 PASAR MALAM SUDAH BER
ACHIR ^{The} Night Fair is over
1968. 46 x 60 cm
- ✓ 29 PEMANDANGAN TJOKLAT
Landscape in Umber
1968. 67 x 41 cm
- ✓ 30 ANAK ANAK - Children
1968. 65 x 41 cm
- ✓ 31 MENTARI SETELAH
SEPTEMBER 1965
The Sun after September 1965
1968. 150 x 135 cm
- 32 MALAM DIKOTA TUA
The Nightfall in the old Town
1968. 69 x 53,5 cm
- ✓ 33 MUSIM BUNGA DIDUSUN B.
The Blooming at the B Village
1968. 48 x 64 cm
- ✓ 34 LEMBUR GERSANG
Barren Hamlet *the deserted village*
1968. 60 x 46 cm
- ✓ 35 SENDIA BERLANGIT MERAH
Sundown with ^{The} red Sky
1968. 99 X 72,5 cm
- ✓ 36 LAJANG² ADUAN
The Fighting Kites
1968. 100 X 100 cm
- ✓ 37 PEDESAAN DILERENG BUKIT I
The Village uphill I
1968. 55 x 70 cm
- ✓ 38 PEDESAAN DILERENG BUKIT II
The Village uphill II
1968.
- ✓ 39 TIGA FIGURA ^{The} - Three figures
1968 52 x 85 cm
- ✓ 40 PERKAMPUNGAN DILUAR KOTA
^A Suburb
1968. 100 x 100 cm
- ✓ 41 PENDJADJA ^{The} - Vendor
1968. 40.5 x 64.5 cm
- 42 KOMPOSISI - Composition
1968. 52 x 85 cm

Semua lukisan tjat minjak atas kain / All paintings are oil on canvas

1 - 6 OKTOBER 1968. DI GEDUNG BALAI BUDAJA DJL. GEREDJA THERESIA 47 DJAKARTA